

「210mm mono PERC half-cell, high-efficiency monofacial module」

530-555W 0-5W Positive Tolerance



MBB&SMBB Half-cut Cell Technology

New circuit design, lower internal current, and lower R_s loss.



High Power Density

A new generation of monocrystalline products with reduced resistive losses for greater power output.



Mechanical Properties

An aluminum frame in special design for better mechanical properties and more efficient installation.



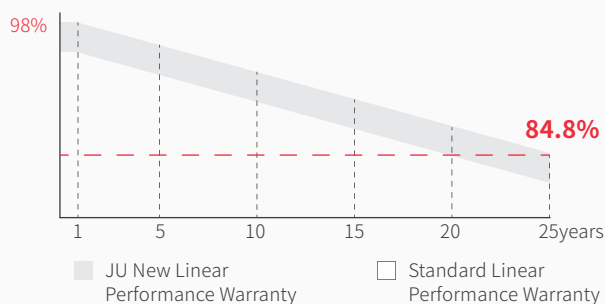
Excellent Weather Resistance

The solar modules can meet the IEC standard requirements with strong resistant to risks such as salt spray, ammonia gas, dust, snail marks and electric potential induced attenuation.



4 Times 100% EL Detection

Guarantee no micro cracks

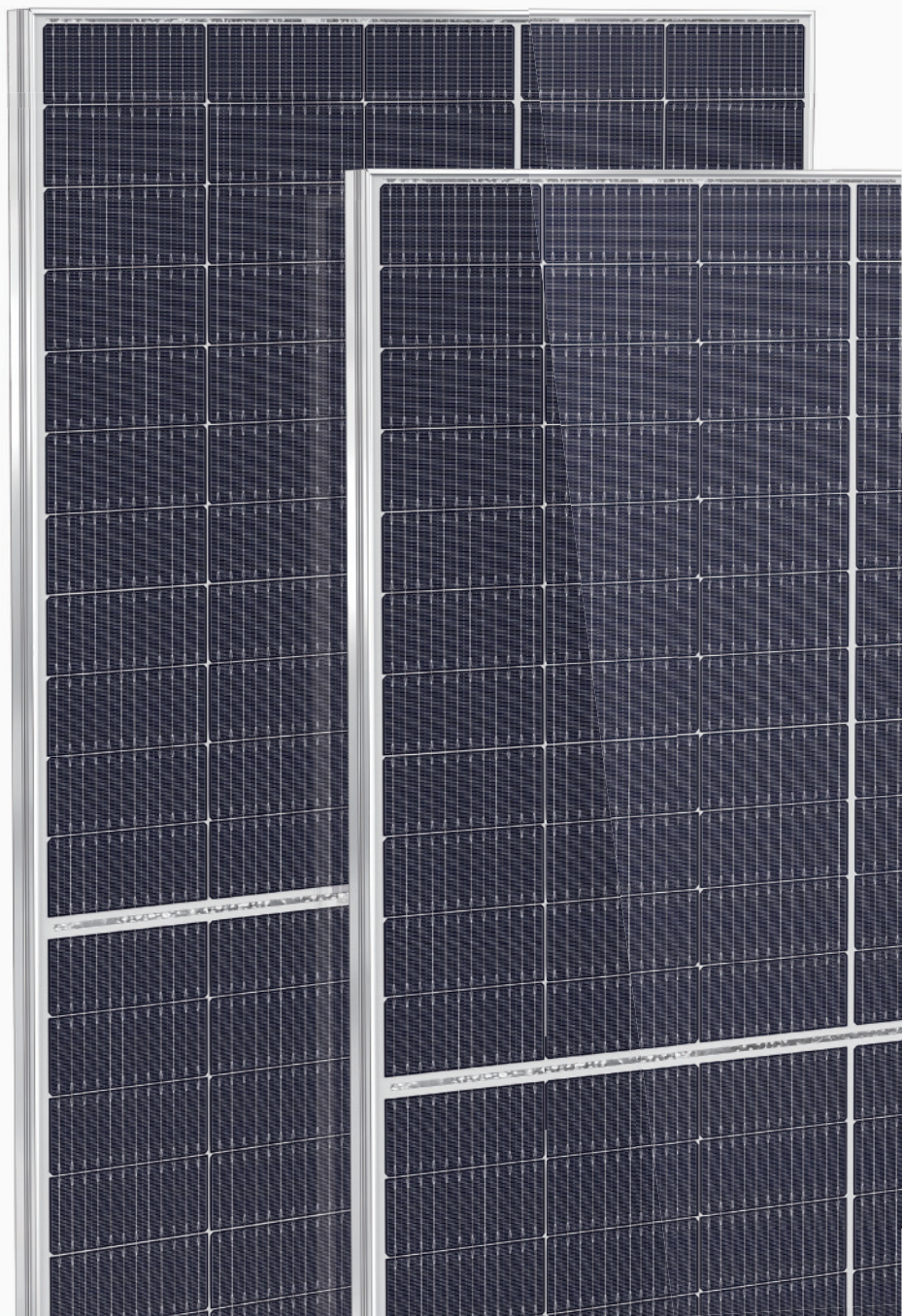


12years Material & process Warranty

25years Linear Performance Warranty

0.55% Linear Power Degradation

PRODUCT QUALITY SYSTEM & CERTIFICATION



ELECTRICAL PROPERTIES

JU-210M-55H 110PCS

STC : irradiance, 1000W/m²; cell temperature, 25°C; spectral range, AM1.5

NOCT: irradiance, 800 W/m²; ambient temperature, 20 °C; spectral range, AM1.5; wind speed, 1m/s

	STC	NOCT	STC	NOCT	STC	NOCT	STC	NOCT	STC	NOCT	STC	NOCT
Maximum power - P _{mp} (W)	530	401	535	405	540	409	545	413	550	417	555	420
Open-circuit voltage - V _{oc} (V)	37.14	35.00	37.35	35.10	37.75	35.30	37.76	35.50	37.95	35.70	38.13	35.90
Short-circuit current - I _{sc} (A)	18.31	14.76	18.36	14.80	18.41	14.84	18.47	14.88	18.52	14.92	18.56	14.96
Maximum operating voltage - V _{mp} (V)	30.81	28.60	31.02	28.80	31.23	29.00	31.43	29.20	31.62	29.30	31.83	29.50
Maximum operating current - I _{mp} (A)	17.21	14.01	17.25	14.06	17.31	14.10	17.35	14.15	17.40	14.19	17.44	14.23
Module conversion efficiency - η _m	20.28%		20.48%		20.67%		20.86%		21.05%		21.24%	
Power tolerance (W)	(0, +5)											
Mechanical load	Front5400Pa/Back2400Pa											
Maximum system voltage (V)	1500											
Maximum series fuse rating (A)	30											
Operating temperature	-40~+85°C											

MECHANICAL PROPERTIES

Module dimensions(L*W*H)	2384 x 1096 x 35mm
Weight	28.6kg
Cell quantity	110PCS
Cell model	PERC Monocrystalline210 x 105mm
Glass	3.2mm AR, High Transmission, tempered glass
Frame	Anodized aluminium alloy
Junction box	IP68 Rated
Output line	4.0mm ² , wire length 300mm
Connector	MC4 Compatible

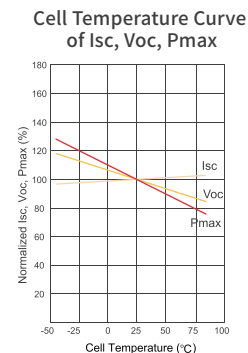
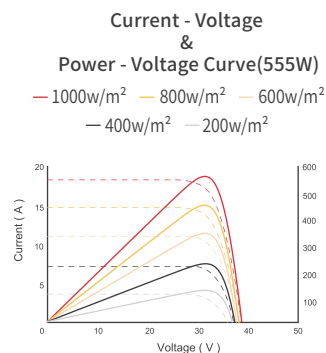
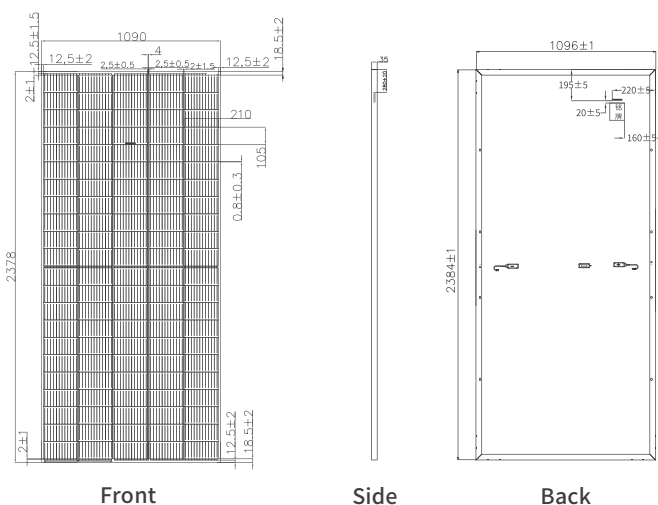
TEMPERATURE CHARACTERISTIC

Temperature coefficient (P _{max})	-0.34% / °C
Temperature coefficient (V _{oc})	-0.25% / °C
Temperature coefficient (I _{sc})	+0.04% / °C
NMOT	43±2°C

PACKAGING

Container	40HQ
PCS / Pallet	31
PCS / Container	620

PRODUCT ASSEMBLY DRAWING(mm)



20GW ODM/OEM Solar Customization



www.jinenusolar.com



jingyou@jinenusolar.com



0086-400-888-3165



Zibo JinenU Solar Technology Co., LTD
3005, Silk Road, Zhoucun District, Zibo,
Shandong, China
Taizhou JinenU New Energy Co., LTD
568, Taizhou Road, Jiangyan District, Taizhou,
Jiangsu, China
Tai'an JinenU Solar Co., LTD
58 Zhongtianmen Street, High-tech Zone, Tai'an,
Shandong, China

*Specifications included in this datasheet are subject to change without notice.

JinenU reserves the right of final interpretation. (202304V02)