



**Zibo JinenU Solar Technology Co., LTD**

3005, Silk Road, Zhoucun District, Zibo, Shandong, China

**Taizhou JinenU New Energy Co., LTD**

568, Taizhou Road, Jiangyan District, Taizhou, Jiangsu, China

**Tai 'an JinenU Solar Co., LTD**

58, Zhongtianmen Street, High-tech Zone, Tai 'an, Shandong, China

**Qianshan JinenU Solar Technology Co., LTD**

0259 Donghuan Road, Qianshan City, Anqing City, Anhui Province, China

**Yuexi JinenU Solar Technology Co., LTD**

No. 3, Great Health Industrial Park, Economic Development Zone, Yuexi County, Anqing City, Anhui Province, China

**Hexian JinenU Solar Technology Co., LTD**

No. 1 Jilongshan Road, He County, Maanshan City, Anhui Province, China



[www.jinenusolar.com](http://www.jinenusolar.com)



[jingyou@jinenusolar.com](mailto:jingyou@jinenusolar.com)



0086-400-888-3165



Follow JinenU for more information



# JinenU Solar

## Manufacturing for You



**JinenU Solar**  
**晶优光伏**



MAKE SOLAR MODULE BE INSTALLED WORLDWIDE



# FOCUS ON

## 23GW ODM|OEM

### Solar Customization

Since its establishment in 2020, JinenU Solar Group has been aiming to build the world's largest "Foxconn" in the photovoltaic industry. With the innovative business model of "focusing on ODM|OEM", JinenU Solar has been providing customers with customized services for a full range of high-efficiency solar modules.

Realizing customer value is the key for JinenU Solar to keep pursuing the innovation model, and exceeding customer expectations is the guideline for JinenU Solar to cooperate with partners. JinenU Solar Group guides the manufacturing production based on customers' demands, providing systematic processes including factory verification, sample confirmation, raw material procurement, mass production, product delivery, after-sales service, etc. JinenU Solar works closely with customers in all steps, ensuring effective cost control and excellent quality to gain production advantages. With quick and flexible feedback, sufficient production capacity and strong financial advantages, JinenU Solar can fulfill customers' orders in the shortest possible time, so that customers can devote themselves to the promotion and marketing of their products to obtain the greatest benefits.

With the mission of benefiting the Earth, JinenU Solar adheres to the principles of integrity and honesty, refusing to engage in any deceitful or misleading practices. JinenU Solar ensures the timely delivery of efficient and stable solar modules to its global customers.



Existing Capacity    Planned Capacity  
**>23GW**            **>50GW**



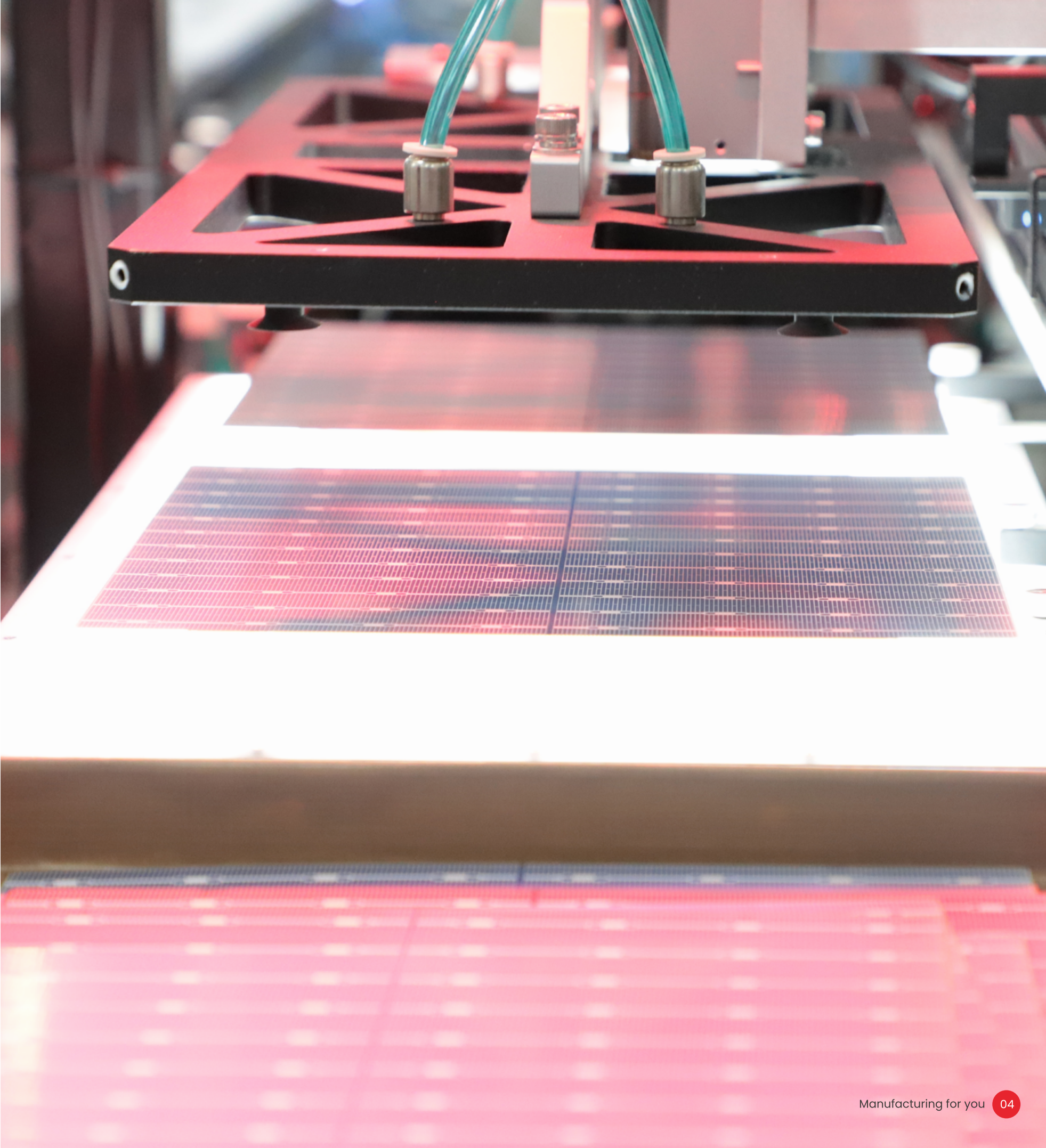
One-Stop Multi-Location Delivery  
**7** Production Bases



Power  
**400-720W**



**Comprehensive layout of  
N-type and P-type modules**





# 7 PRODUCTION BASES

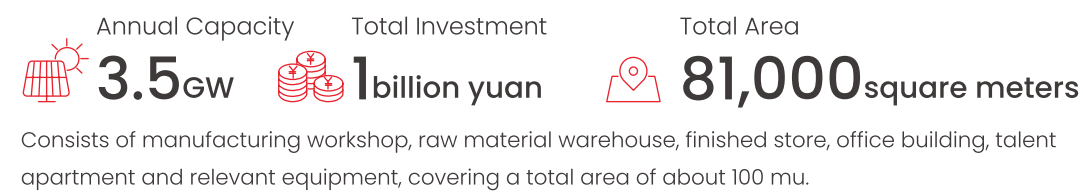
## WITH 23GW CAPACITY

(including the base in Batam Island under preparation)

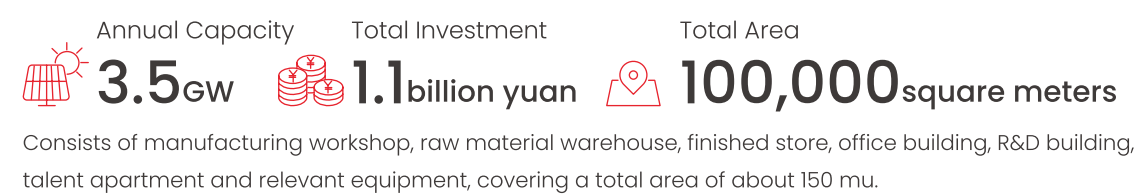
### Zibo · Shandong



### Taizhou · Jiangsu



### Tai'an · Shandong



### Qianshan · Anhui



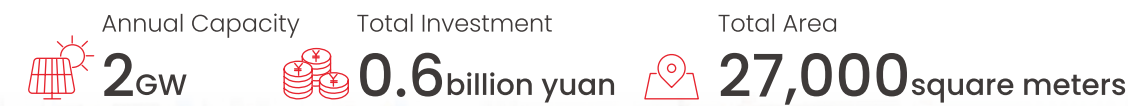
### Hexian · Anhui



### Yuexi · Anhui



### Batam · Island





# GREEN INTELLIGENT MANUFACTURING

We adopt a new generation of advanced production lines equipped with highly automated and intelligent AI production equipment, to reduce errors caused by human factors. On average, we can produce a high-efficiency module every 16 seconds, with a single-shift production capacity of 2500+. This effectively improves productivity and yield. By implementing a scientific production management system, we can increase the utilization of production capacity. Moreover, we allocate the most stable equipment for the nine key processes that have the greatest impact on yield, thereby reducing production costs.

In addition, we utilize advanced MES, ERP, WMS, and other intelligent and information management systems to effectively connect with the production line. So that the production process is transparent and traceable and the data of each module can be retrieved at any time. This ensures timely delivery of high-efficiency and stable modules to global customers, while establishing a highly flexible and intelligent production model.



AI Manufacturing  
for Real-time Visual  
Positioning



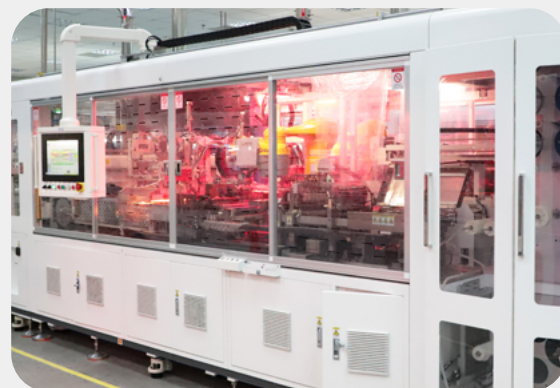
Lean Production  
Management for  
Low Cost



Scientific  
Manufacturing for  
Higher Capacity  
Utilization



Proficient and Flexible  
Manufacturing for  
On-time Delivery



## Automatic Soldering Stringer

Realize the welded series connection of cells

The equipment is compatible with a wide range of cell sizes, such as 182mm, 210mm, etc. Through the infrared low-temperature welding process, the positive and negative electrodes of the cells are welded to form a series-connected cell string.



## Automatic Welding Machine

Realize the soldering of busbar and soldering tape

The device uses a high-speed welding machine to make adjustments to the prearranged cell strings. It utilizes electromagnetic induction welding to achieve fully automatic interconnection welding of the busbars, with visual positioning detection.



## Automatic Laminating

Enable laminated encapsulation of modules

Through the double-layer double-cavity electrically heated laminator vacuum, the air inside the module will be discharged, and at the same time, the heating temperature will make the adhesive film melt to stick the cell, glass and other materials together, so as to encapsulate the cell inside the module loading and unloading of raw materials.



## Automatic Framing

Realize the installation of modules and borders

Adopt automatic gluing and framing integrated machine to install the frame onto the laminated module. This enables automated movement, gluing, carrying, and framing, resulting in high precision and efficiency in assembly.



# STRICT QUALITY CONTROL



## Rigorous Supplier Management System

JinenU develops the high standard of quality control from raw material selections by nearly 200 tests, adopting a comprehensive leading inspection equipment for strict incoming material test according to industry standards. Only after passing the inspection standards can incoming materials be imported. Through comprehensive and rigorous technical analysis, test, and trial production, it can be formally put into mass production.

### Number of Key Test Points for Each Raw Material

8

Cell Tests

12

Solder Strip Tests

31

Glass Tests

12

EVA Tests

16

Backsheet Tests

12

Bus bar Tests

20

Junction Box Tests

14

Frame Tests

## Advanced Test Equipment

The main 29 test devices, including cell test equipment, module power test equipment, safety test equipment, wet leakage current test equipment, tensile test machine, cross-linking degree test equipment, electronic density gauge, coating thickness gauge, webster hardness tester, etc. were put into operation after being calibrated and qualified by authoritative institutions.



Cross-linking Degree Test



Cell Test



Horizontal Tensile Machine

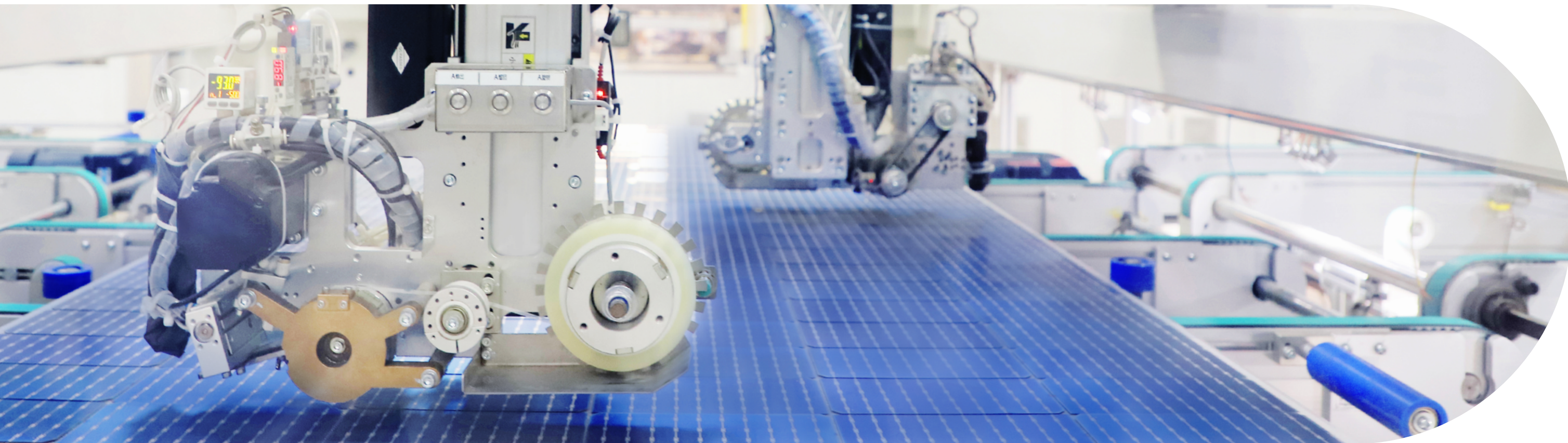


Wet Leakage Current Test



Universal Tensile Machine





### AI Real-time Detection

JinenU adopts AI vision technology in the whole process of module manufacturing and big data platform to comprehensively improve its digitalization and intellectualization. This demonstrates a two-way improvement in production effectiveness and product quality by adopting AI vision inspection on 30 key nodes in the allocation of production resources and module production process.

### 4 Times 100% EL Detection to Minimize Micro Cracks

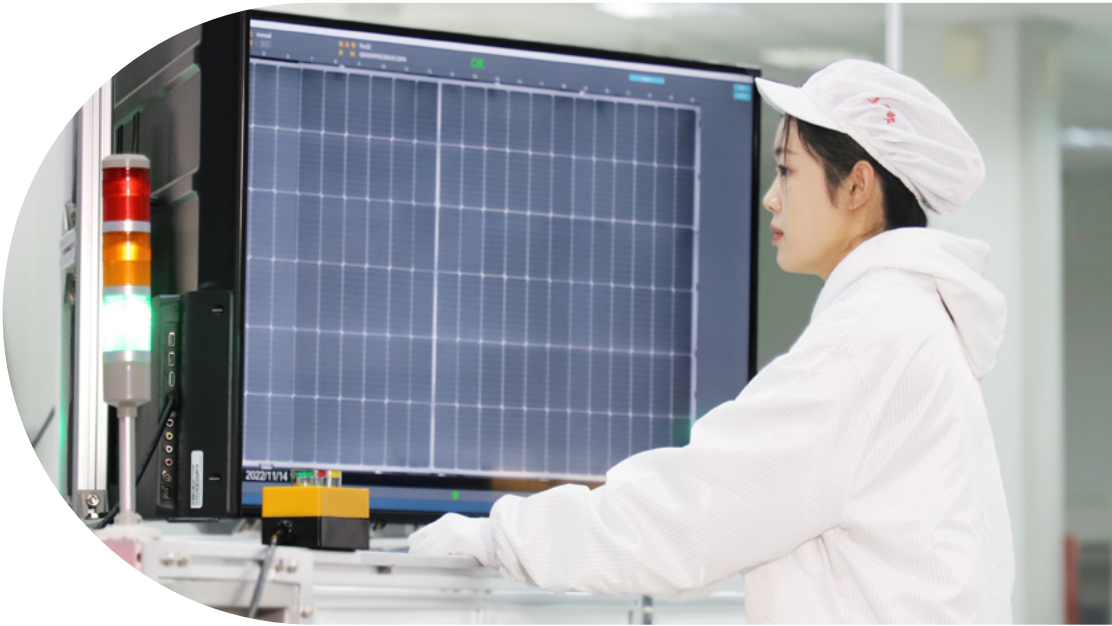
JinenU owns advanced quality monitoring equipment, using 4 times EL detection in the production process. The production line adopts horizontal direct photography, equipment identification accuracy <0.5mm/pixel. The shooting time is 0.5s, and the test time is 2s/string with AI intelligent judgment and click to enlarge, which is convenient to check the type of defects and the working state of the series welder.

### AI Inspection Process

### Function

- Laminating-AI automatic inspection EL inspection
- Before laminating - AI inspection
- Surface inspection after laminating- AI inspection
- EL inspection after laminating- AI inspection
- Final inspection- AI inspection
- Junction box welding- AI inspection

- 7 Automatic measurements
- 28 Automatic inspections of EL & surface
- 44 Surface automatic identifications
- 18 EL automatic identifications
- 76 surface automatic identifications
- Welding visual inspection

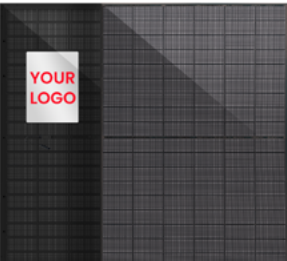




# TOP-CLASS SOLAR MODULE

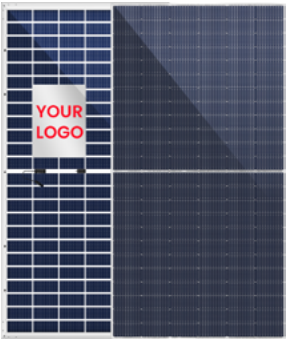
## Diverse Technologies

Fully-compatible intelligent production facilities enable customized modules to meet the diversified needs of customers. Combining 182mm and 210mm cells with MBB & SMBB technology, we provide our customers with high-conversion modules suitable for various application scenarios, and customize the modules according to the needs of our customers to adapt to different regional markets.



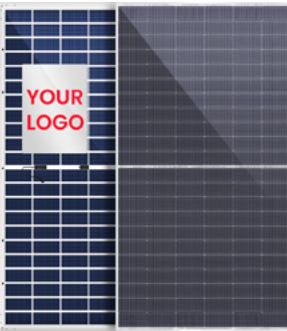
430-450W

JU-182-54HBG TOPCon Black



565-585W

JU-182-72HBG TOPCon



605-625W

JU-210R-66HBG TOPCon



690-710W

JU-210-66HBG TOPCon

## Quality Certifications

JinenU Solar delivers high-quality solar modules that stand the test by strict quality control and inspection process, stringent acceptance criteria and tight tolerance levels, striving to achieve the target of 100% yield. JinenU Solar's modules have been certified by three systems, CQC, TUV, CE, CB, BIS, JPEA, MyHIJAU and other multi-national product quality systems.



2021

182mm PERC  
Monofacial and bifacial  
modules mass production

2023

182mm TOPCon  
Monofacial and bifacial modules  
mass production

2022

210mm PERC  
Monofacial and bifacial modules  
mass production

2024

210mm TOPCon  
Monofacial and bifacial modules  
mass production



# CUSTOMIZED MANUFACTURING SERVICE

## Customized Production Service

JinenU owns professional intelligent manufacturing production bases and is committed to becoming a sustainable module manufacturing service platform.

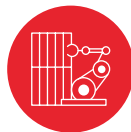
JinenU can not only meet customers' demand for high-quality products, but also provide customers with comprehensive customized supply chain services by precision and lean supply chain management and robust capital advantages.



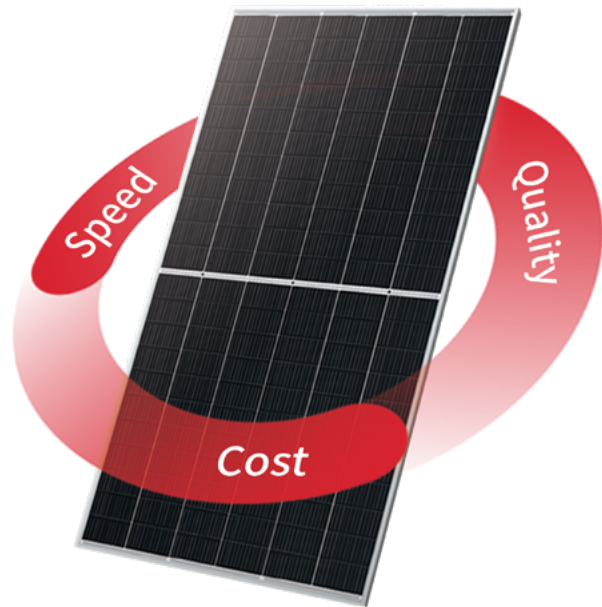
Raw materials procurement  
for flexible customization



Flexible configuration of  
manufacturing bases



Customized manufacturing  
for various product types



## Flexible Service Model

JinenU Solar provides exclusive customized services in pre-sales, production, or after-sales according to the different stages of customers' needs. We organize and integrate the resources of various departments to adjust and improve the service content to ensure that customers can enjoy the most perfect service. Each base cultivates efficient customer service teams to provide customers with efficient and high-quality services, forming a closed loop of customer satisfaction.

### Customer Satisfaction Survey 24-hour Feedback Mechanism Multi-base Service Support



Customer satisfaction is surveyed from multiple dimensions via one-on-one telephone interviews to questionnaires, and input into the system for improving the service quality.



Adhering to a 24-hour feedback mechanism, timely feedback is available for customers' inquiries via email and telephone to resolve the problem quickly.



We have technical support and service teams with rich experience at different production bases, providing customers with comprehensive solutions.





JinenU' s corporate social responsibility plays an important role in an advanced corporate culture. We are committed to smart green manufacturing, providing high-efficient and stable solar module for global partners, and fulfilling corporate' s commitment to environmental protection.

## MISSION

# BENEFIT THE EARTH

## VISION

Make Solar Module Be Installed Worldwide

## VALUE

Integrity  
Doing Good  
Excellence  
Incorruptibility

## REQUIREMENTS

High Quality  
High Standard  
High Efficiency  
High Capability

## CONCEPT

Craftsman Spirit  
Diligent Practice  
Synectics  
Keep Improving